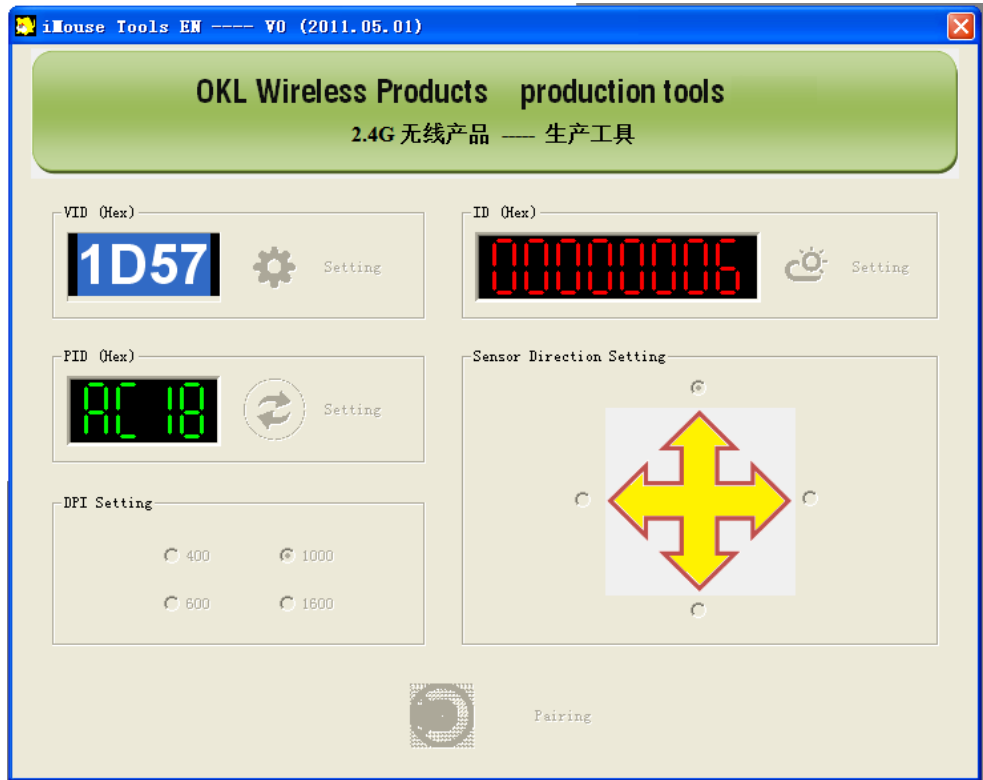


iMouse Repairing Program for 2.4G Wireless Mouse

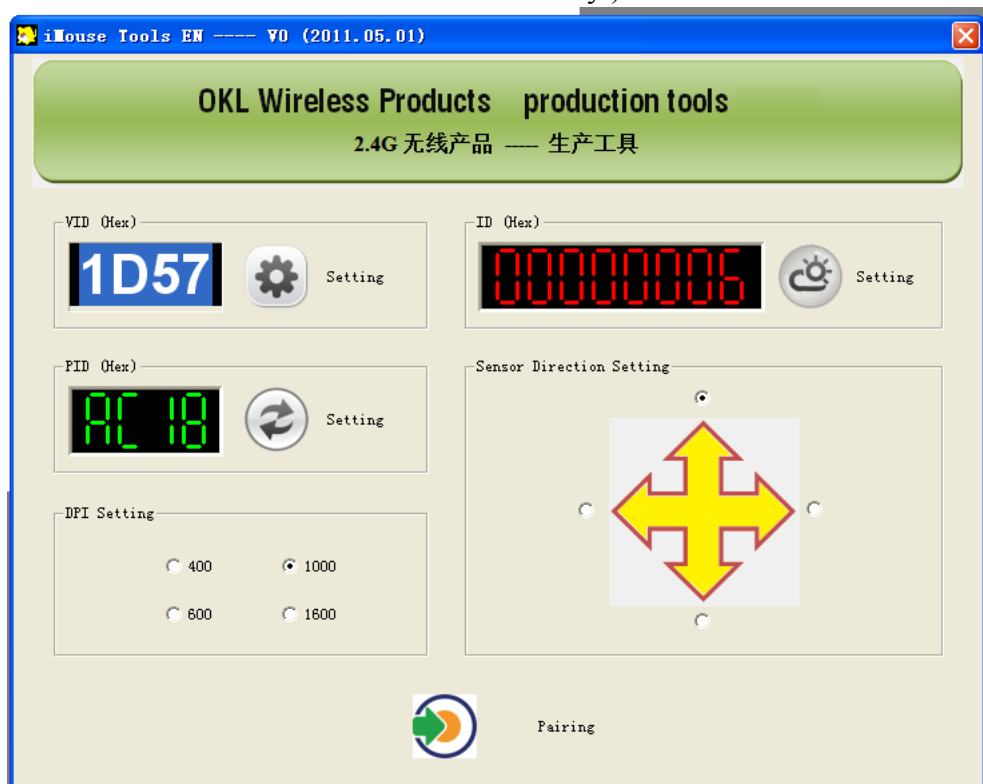
Step 1:

Run iMouse.exe. (All buttons are not functional while installing.)



Step 2:

Connect the Nano Receiver to the USB port of your computer. (The buttons are activated after the receiver is inserted correctly.)



Step 3.

You can reset the PDI and PID/VID control parameters if you are familiar with it. However, it's not recommended.

Remark: iMouse will remember the settings and will take effect the next time you start the program.

Step 4:

Press the middle and the right buttons of your mouse in the same time for 3 to 5 seconds and release at the same time.

Step 5:

Click the “Pairing” button in 10 seconds.



Once the pairing process is done, an “OK” sound will appear to remind you. But if the process is failed, an error dialog will appear instead. Please repeat the steps above to repairing.